



- Applications**
- * Serial Communications
 - * Routers
 - * Switches
 - * WAN Interfaces
 - * Test Equipment

- * LVPECL Output
- * Industry Standard Outline

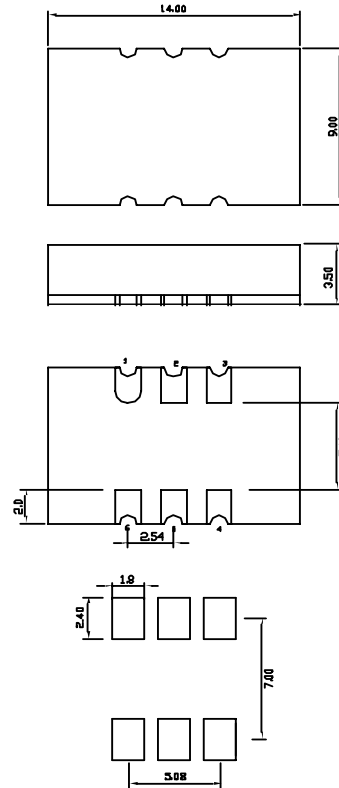
Part Numbering Example: CTVED Z - A5 B3 - 222.5792 TS

CTVED	Z	A5	B3	222.5792	TS
SERIES	PACKAGING OPTIONS	OPERATING TEMP.	STABILITY	FREQUENCY	TRI-STATE
CTVED	Blank = Bulk Z = Tape and Reel	Blank = 0°C ~ +70°C A5 = -20°C ~ +70°C	B3 = ±2.5 ppm		TS = Tri-State

Specifications:	Min	Typ	Max	Unit
Frequency Range:	38		640	MHz
Stability:	- 2.5		+ 2.5	ppm
Supply Voltage:	3.135	3.3	3.465	V
Frequency Tuning Range:		+/- 8		ppm
External Control Voltage:	0.35		3.0	V
Operating Temperature:	-30		+ 70	°C
Storage Temperature:	-40		+ 85	°C
Duty Cycle:	45		55	%
Start-Up Time:		3	10	mS
Aging: (ppm/1st Year) Ta=25C, Vdd=3.3V			1	ppm
Supply Current:			100	mA
Short Circuit Current:		± 50		mA
RMS Period Jitter:		5		pS
RMS Integrated Jitter: 12kHz to 20MHz		0.7		pS
Phase Noise @ 10kHz:			-120	dBc/Hz
Output Voltage:				
Voh	Vdd - 1.025			V
Vol			Vdd - 1.62	V
Rise/Fall Time:		0.4	0.8	nS
Output Level:	LVPECL			
Packaging:	Tape and Reel 1000 pcs per Reel			

CTVED

Dimensions are in mm



- PIN Function**
- 1 VCONTROL
 - 2 DISABLE
 - 3 Ground
 - 4 LVPECL +
 - 5 LVPECL -
 - 6 Vdd

LVPECL Levels Test Circuit

